

# **SWAN VALLEY SPORT FISHING ENHANCEMENT INC.**



## **PROJECTS UPDATE**

*Swan Valley Sport Fishing Enhancement, with the support of partners and Fisheries Enhancement Fund (FEF), have conducted/initiated various studies and programs including: fish habitat enhancement, walleye telemetry work, trap netting programs, creel surveys, stocked trout index netting, stocking initiatives, promotion of local lakes, improvement of fishing access and has also become a strong venue for fisheries education. These programs and projects have been very beneficial for the local area and have attracted attention from all interested public. The results from recent research projects have already contributed to current management and stocking decisions. Many projects require continual or rotational surveys to validate results and to obtain a better understanding of the state of the fishery.*

### ***What's happening for the 2014 Season:***

- **Spawn Assessment & Year Two Trap Netting Program at Marge Lake** – Since 2010, Marge Lake has been stocked with over 1,100 sub adult and adult walleye through the Beautiful Lake Adult Walleye Transfer Project. 2014 assessments were conducted this spring to identify critical spawning habitat and evaluate the current health and population of the fishery. Further recruitment assessments are planned for later in the season. A zero walleye limit has been established to provide newly introduced walleye a chance to develop. Once the results determine this fishery stable, limits will be established by management and SVSFE stocking committee. Until then, anglers can still enjoy the fishing experience the unique fishery has to offer.



- **Post Spawning Shoal Development Monitoring & Year Two Trap Netting Program at Beaver Lake** – Beaver Lake is also a candidate lake for the Beautiful Lake Adult Walleye Transfer Project and since 2011 over 1,500 sub adult and adult walleye have been transferred. In March of 2014, SVSFE received funding from the Recreational Fisheries Conservation Partnership Program (RFCPP – Gov't of Canada) to construct two individual spawning shoals along the east and south shoreline. Community support was a

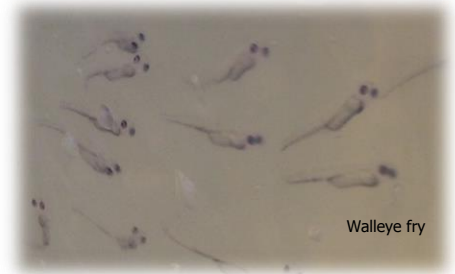


large part of the project and SVSFE is grateful to everyone who contributed. These shoals will provide valuable spawning habitat for the newly introduced walleye and also other valuable forage species. The 2014 assessments were conducted this spring to monitor the spawning shoals and evaluate the current health & population of the fishery. Recruitment assessments are scheduled for later this season. Beaver Lake regulations include walleye limit of 2 with a slot of 45 – 70 cm to be released. With the cooperation from anglers this fishery can offer a valuable fishing experience for years to come and we ask anglers to practice catch and release.

**THANKS FOR YOUR PARTICIPATION AS YOUR INFORMATION IS ESSENTIAL TO THE MANAGEMENT OF OUR FISHERIES RESOURCES.**

- **Stocking** – SVSFE has assisted Manitoba Water Stewardship in stocking for many years. Data collected during research assessments conducted by SVSFE directly benefits stocking decisions. This year's stocking to date (as of June 18<sup>th</sup>, 2014) includes:

- **Walleye** fry to; Verrall, Wellman, Spray, Singush, Child's, Beautiful, Langan, Swan River, Deep, Virgin, North, Winnipegosis, Bell & North Steeprock Lake
- **Rainbow Trout** fingerlings to; Gull Lake
- **Brook Trout** fingerlings to; Black Beaver & Gull Lake
- **Brown Trout** fingerlings to; Laurie Lake



▪ **MANY MORE STILL TO COME!**

- **Adult Walleye Transfer** – Stocking adult walleye is very beneficial for; the survival of the fish, providing instant angling results, increasing spawning populations and increasing recruitment success. The Beautiful Lake Walleye Transfer is scheduled for September, which will mark the 6<sup>th</sup> year which SVSFE along with Conservation & Water Stewardship (MWS), Intermountain Sport Fishing Enhancement and countless volunteers have stepped up to the challenge and transfer 1000s of sub adult/adult walleye to local lakes.

- **OTC & Recruitment Assessments at Bell & North Steeprock Lake** – OTC or Oxytetracycline is a solution used to mark the boney structures of hatchery raised walleye fry. This mark helps managers, at recapture time, determine whether a walleye within a waterbody is natural or stocked. SVSFE has partnered with MWS on this initiative and currently has Bell and North Steeprock Lake scheduled for sampling for early September. Sampling will include collecting samples of young of the year walleye for OTC analysis with the capture by the use of FEF's electroshocking boat. This is a very useful tool in proper stocking management and in the end, walleye fry will be distributed more effectively based on relevant science that leads to quality management.



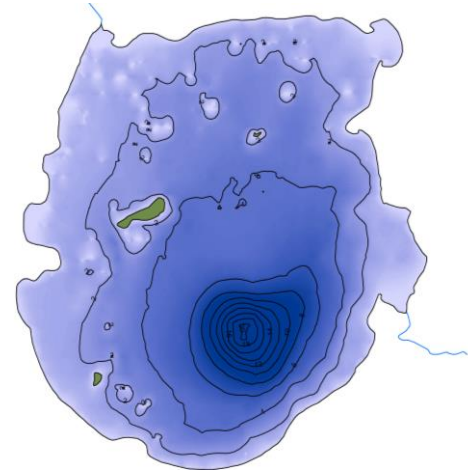
- **Fish Camp** – Camp is scheduled for August 20<sup>th</sup> – 24<sup>th</sup> at the United Church Camp for campers ages 10-14. Camp provides both theoretical and practical fishing experiences designed to inform & motivate kids to pursue the goals of protecting, restoring, and sustaining fisheries and their watersheds. Sign up soon as spaces are limited.



**THANKS FOR YOUR PARTICIPATION AS YOUR INFORMATION IS ESSENTIAL TO THE MANAGEMENT OF OUR FISHERIES RESOURCES.**

- **Fishing Access Improvement** – SVSFE plans to install docks to improve angling opportunities at various lakes. If there is an area where you would like to see access or dock improvements please share your input and contact us ([svsfe@mymts.net](mailto:svsfe@mymts.net)).

- **Depth Maps** – Over the past 5 years, SVSFE technicians have collected bathymetric data on various lakes surrounding the Swan Valley area. From this data and through GIS and software support from Manitoba Water Stewardship, up to date depth maps are currently being creating and will be available to the public in the very near future.



- **Tagged Fish INFO** – And don't forget to submit your tagged fish info. There are several lakes which have tagged fish. Please note tags become dirty under water over time, please wipe the tag clean to ensure the correct tag number. Submitting your info (tag number, color, species, length, weight, location, etc.) to SVSFE or Water Stewardship Fisheries Branch will provide beneficial information towards the goal of creating an extraordinary fishery within the Swan Valley Region for generations to enjoy.

*Past and current SVSFE Projects have been funded by Fisheries Enhancement Fund (FEF), Recreational Fisheries Conservation Partnership Program (Gov't of Canada), Service Canada- Canada Summer Jobs, Swan Valley Sport Fishing Enhancement (SVSFE), Manitoba Conservation & Water Stewardship, Glad & Wellman Lake Cottage Owners Association, Singush Lake Cottage Owners Association and the Swan Lake Watershed Conservation District.*

*If you have any questions, comments, feedback or fishing stories to share with us, please contact us by emailing [svsfe@mymts.net](mailto:svsfe@mymts.net) or become our friend on Facebook "Swan Valley Sport Fish"*

**SWAN VALLEY SPORT FISHING ENHANCEMENT INC**  
**BOX 120**  
**SWAN RIVER, MB**  
**ROL 1Z0**  
**(204) 734-8836**

**THANKS FOR YOUR PARTICIPATION AS YOUR INFORMATION IS ESSENTIAL TO THE MANAGEMENT OF OUR FISHERIES RESOURCES.**