

# **SWAN VALLEY SPORT FISHING ENHANCEMENT INC.**



## **2015 PROJECTS UPDATE**

*Swan Valley Sport Fishing Enhancement, with the support of partners and Fisheries and Wildlife Enhancement Fund (FWEF), have conducted/initiated various studies and programs including: fish habitat enhancement, walleye telemetry work, trap netting programs, creel surveys, stocked trout index netting, stocking initiatives, promotion of local lakes, improvement of fishing access and has also become a strong venue for fisheries education. These programs and projects have been very beneficial for the local area and have attracted attention from all interested public. The results from recent research projects have already contributed to current management and stocking decisions. Many projects require continual or rotational surveys to validate results and to obtain a better understanding of the state of the fishery.*

### ***What's happening for the 2015 Season?***

- **Glad Lake Management Plan** – SVSFE and Wildlife & Fisheries Branch have recently decided to re-introduce arctic char in to Glad Lake. We recently received funds from the Hunter and Angler Preservations



Glad Lake Char 2011

Fund of \$4800 to purchase Arctic Char Eggs destined for Glad Lake. The Whiteshell Hatchery has partnered with this project and will be raising the char prior to stocking in 2016 and 2017. In the meantime SVSFE technicians will be collecting data on Glad Lake to determine a baseline, or "state of fishery" prior to stocking. Data collected will aim to collect species and forage compositions as well as population estimates. Any Northern Pike captured during the assessments will be re-located to nearby pike fisheries.

- **Singush Lake Inventory** – Fisheries & Wildlife Branch have recently requested that a current lake inventory of Singush Lake be completed. Through funding acquired through the Fish and Wildlife Enhancement Fund, SVSFE will be conducting a standard ESTN (End of Spring Trap Netting) protocol on Singush Lake. Assessments will be completed in June of 2015 and 2016\*. This protocol uses non-lethal methods to collect and "snapshot" of the health and state of the fishery.

- **East Blue Lake Follow-up Assessments** – The quality of sport fishing success at East Blue Lake has been in decline for some years now and has been a "hot-topic" amongst lake managers and lake users. A short assessment (BTIN) will be completed on East Blue in early July and that data will be compared to data collected from the same protocol conducted by SVSFE in 2010/2011. This assessment will aim to collect information on trout health/growth as well as forage composition and availability. The objective of this assessment is to determine a more efficient stocking program, and/or management plan for East Blue Lake.



East Blue Rainbow

**THANKS FOR YOUR PARTICIPATION AS YOUR INFORMATION IS ESSENTIAL TO THE MANAGEMENT OF OUR FISHERIES RESOURCES.**

- **New Fishery and Rearing Pond Exploration** –

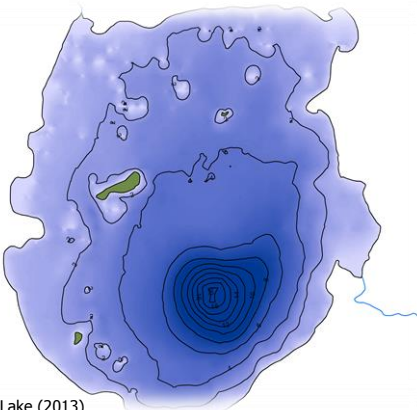
Throughout the summer SVSFE plans to explore various lakes to determine if they could provide new opportunities to anglers and lake managers. SVSFE will be conducting various assessments on candidate lakes to determine if they could support trout introductions for recreational use; or walleye introductions for rearing and transferring purposes. Lakes on the list are currently Harvey Lake, Kokot Lake, Watjask Lake, Little Laurie Lake, Dragline Lake, Koons Lake and a few others. Note that candidate lakes are subject to change and feedback/suggestions are encouraged.



- **Wellman Lake Spawning Reef:** In late June SVSFE intends to spend a few days documenting accurate depths and substrate compositions on the Wellman Lake spawning reef. This reef was enhanced in the 1990's and became a popular walleye-spawning location. In recent years, studies have determined that the reef is not performing as it used to. The data collected will become the baseline for a "light enhancement" project that SVSFE plans to initiate in the near future.

- **Bell Lake Forage Transfer** – It has been suggested for years that a new forage species should be stocked into Bell Lake to increase walleye productivity. After some eye-opening results during electro-fishing in the fall of 2014, SVSFE determined that it was time to "give it a go". We are currently looking for the most viable option to acquire a sum of non-threatening forage species, and introductions are intended to transpire over the summer.

- **Depth Maps/Mapping** – Over the past 6 years, SVSFE technicians have collected bathymetric data on over



Beautiful Lake (2013)

20 lakes in and around the Swan Valley area. From this data and through GIS and software support from Manitoba Water Stewardship, up to date depth maps are currently being creating and will be available to the public in the very near future. It is also intended to create 4x8 signs with depth maps of various lakes to be installed at boat launches in the near future. Many Lakes will be mapped in the 2015 field season including the popular trout fishery of Laurie Lake.

**THANKS FOR YOUR PARTICIPATION AS YOUR INFORMATION IS ESSENTIAL TO THE MANAGEMENT OF OUR FISHERIES RESOURCES.**

- **Fish Camp** – SVSFE’s Fish Camp has become a popular entity for young anglers over the past few years. Our 5<sup>th</sup> Fish Camp is scheduled for August 19<sup>th</sup> – 23<sup>th</sup> at the United Church Camp for campers ages 10-14. Camp provides both theoretical and practical fishing experiences designed to inform & motivate kids to pursue the goals of protecting, restoring, and sustaining fisheries and their watersheds. Sign up soon as spaces are limited.

Fish Camp



- **OTC & Recruitment Assessments** – OTC or Oxytetracycline is a solution used to mark the bony structures of hatchery raised walleye fry. This mark helps managers, at recapture time, determine whether a walleye within a waterbody is natural or stocked. SVSFE has partnered with MWS on this initiative and currently has



Bell and North Steeprock Lake scheduled for sampling for early September. Sampling will include collecting samples of young of the year walleye for OTC analysis with the capture by the use of FEF’s electroshocking boat. This is a very useful tool in proper stocking management and in the end, walleye fry will be distributed more effectively based on relevant science that leads to quality management. Recruitment field work is scheduled for North Steeprock, Bell, and Whitefish Lakes in early September.

- **Adult Walleye Transfer** – Stocking adult walleye is very beneficial for; the survival of the fish, providing instant angling results, increasing spawning populations and increasing recruitment success. The Beautiful Lake Walleye Transfer is scheduled for September, which will mark the 7<sup>th</sup> year which SVSFE along with Conservation & Water Stewardship (MWS), Intermountain Sport Fishing Enhancement and countless volunteers have stepped up to the challenge and transfer 1000s of sub adult/adult walleye to local lakes.

Beautiful Lake Crew 2014



**THANKS FOR YOUR PARTICIPATION AS YOUR INFORMATION IS ESSENTIAL TO THE MANAGEMENT OF OUR FISHERIES RESOURCES.**

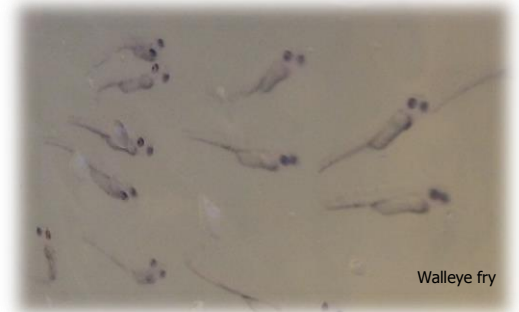


- **Educational Programs:** In 2015, SVSFE resurrected a popular program called the Stewards of the Future Program. Stewards is an ongoing educational program where SVSFE technicians and volunteers work closely with grade 5-6 students throughout the valley. The program provides various seminars to classrooms including special guest Don Lamont, provides rainbow trout for students to raise in their classrooms, arranges trout releasing to respective waterbodies, and even gets the students out of the school for a day of angling. Stewards is designed to encourage students to take up fishing and take part in sustainable fishing practices. Also, SVSFE will be offering a \$1000 bursary to a high school student intending to pursue a post-secondary education in the environmental sector.



- **Stocking –** SVSFE has assisted Manitoba Water Stewardship in stocking for many years. Data collected during research assessments conducted by SVSFE directly benefits stocking decisions. This year's stocking to date (as of May 5<sup>th</sup>, 2015) includes:

- **Walleye** fry (expected) to; Verrall, Wellman, Spray, Singush, Child's, Beautiful, Langan, Swan River, Deep, Virgin, Winnipegosis, Bell & North Steeprock Lake
- **Rainbow Trout** fingerlings to; East Blue and Beautiful
- **Brook Trout** fingerlings to; Black Beaver
- **Brown Trout** brood stock to; Perch Lake



▪ **MUCH MORE TO COME!**

*If you have any questions, comments, feedback or fishing stories to share with us, please contact us by emailing [svsfe@mymts.net](mailto:svsfe@mymts.net) or become our friend on Facebook "Swan Valley Sport Fish"*

**SWAN VALLEY SPORT FISHING ENHANCEMENT INC**  
**BOX 120**  
**SWAN RIVER, MB**  
**ROL 120**  
**(204) 734-8836**

**THANKS FOR YOUR PARTICIPATION AS YOUR INFORMATION IS ESSENTIAL TO THE MANAGEMENT OF OUR FISHERIES RESOURCES.**