

SWAN VALLEY SPORT FISHING ENHANCEMENT INC.



2016 PROJECTS UPDATE

Swan Valley Sport Fishing Enhancement, with the support of partners and Fisheries and Wildlife Enhancement Fund (FWEF), have conducted/initiated various studies and programs including: fish habitat enhancement, walleye telemetry work, trap netting programs, creel surveys, stocked trout index netting, stocking initiatives, promotion of local lakes, improvement of fishing access and has also become a strong venue for fisheries education. These programs and projects have been very beneficial for the local area and have attracted attention from all interested public. The results from recent research projects have already contributed to current management and stocking decisions. Many projects require continual or rotational surveys to validate results and to obtain a better understanding of the state of the fishery.

What's happening for the 2016 Season?

- **SVSFE Zebra Mussel Early Detection Program:** Aquatic invasive species (AIS), particularly zebra mussels are becoming a growing concern in the Province of Manitoba as they continue to move in a north-westerly direction year after year. This invader has a tendency to completely shift the state of aquatic ecosystems including changing water chemistry, clogging up discharge drains, and even impacting fish health and survival. For this reason, SVSFE has decided to initiate a cost-effective early detection program (with support from Fisheries Branch) by installing "zebra mussel samplers" in each of our local angling destinations with intention to be proactive and limit further contamination.
- **Trout Maintenance Programs**– In many trout lakes throughout the province, the increase of non-trout species populations have become a growing concern. These non-trout species, including yellow perch, northern pike, white-sucker, and walleye etc. are strong competitors with trout and have resulted in decreased trout growth/survival and ultimately fishing quality. For this reason, SVSFE and Fisheries Branch have decided



take action regarding this growing concern and initiate programs in which we have called "Trout Maintenance Programs". Throughout the open water season, we will be using various methods including electrofishing and trap-netting to capture and relocate these non-trout species to a variety of candidate lakes. This season, trout maintenance programs initiated will include; Glad Lake (pike), Vini Lake (pike), Two-Mile Lake (perch), Gull Lake (perch), and East Blue Lake (white-sucker).

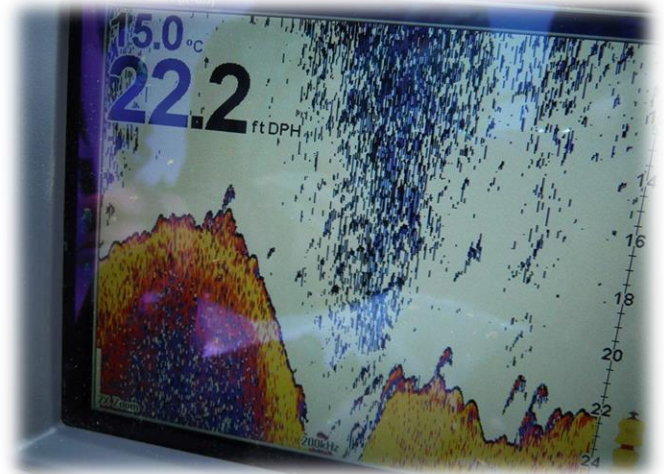
If you have any questions, comments, feedback or fishing stories to share with us, please contact us by emailing svsfe@mymts.net or become our friend on Facebook "Swan Valley Sport Fish"

THANKS FOR YOUR PARTICIPATION AS YOUR INFORMATION IS ESSENTIAL TO LOCAL FISHERIES MANAGEMENT



- **Singush Lake Inventory** – Last year, Fisheries Branch requested a current lake inventory of Singush Lake be completed. Through funding acquired through the Fish and Wildlife Enhancement Fund, SVSFE and branch staff initiated Year One of Non-Lethal Sampling Protocol (End of Spring Trap Netting and Fall Electro-fishing) on Singush Lake. Year two assessments will transpire in the spring and fall of 2016. This protocol collects a “snapshot” of the health and state of the fishery and monitor populations.

- **Lake Inventory, Exploration, and Mapping** – SVSFE has been involved in creating new fisheries, initiating sport fish introductions, and providing anglers with advise/tools to enhance their sport fishing experience since initialization. In the summer of 2016, we intend to complete follow up assessments on a few lakes studied in 2015 including a potential musky lake (West Watjask Lake) along with a couple potential trout fisheries. Also, we intend to acquire baseline data on a few waterbodies to determine potential for sport fish introductions including; Sarah Lake, Moose-horn Lake, and Olsen Lake. During the season, SVSFE plans to depth map some of our regional waterbodies including Child’s Lake, Spray Lake, and Little Laurie Lake.



- **Walleye Recruitment Surveys:** Determining natural recruitment success and stocking efficiency of walleye lakes has become a high priority for SVSFE and Fisheries Branch over the years. Through conducting these surveys we can (1) determine appropriate and more effective stocking rates, and (2) help determine the success of natural recruitment. In 2016, we plan to conduct recruitment surveys through beach seining on Whitefish Lake, Beaver Lake, and Marge Lake. Also, through a mark and recapture method known as OTC Detection (Oxytetracycline), we anticipate to determine recruitment success on both Wellman and Singush Lakes. OTC is a solution used to mark the boney structures of hatchery raised walleye fry. This mark helps managers, at recapture time, determine whether a walleye within a waterbody are natural or stocked. SVSFE has partnered with MWS on this initiative and sampling is scheduled to occur in September.



THANKS FOR YOUR PARTICIPATION AS YOUR INFORMATION IS ESSENTIAL TO LOCAL FISHERIES MANAGEMENT

- **Supplemental Fish Stocking and Adult Walleye Transfer**

As we all know, stocking fish is essential to sustaining fisheries where natural recruitment is either low or non-existent. For this reason, SVSFE tends to involve ourselves, whenever possible, by assisting Fisheries Branch in supplemental stocking. Through assisting we are able to aid in “scatter stocking” of both trout and walleye throughout the open water season. Scatter stocking, as the word suggests, essentially scatters fish throughout a specific water body and therefore increases chances of survival. The group has also purchased fish outside of the provincial stocking program to stock in local lakes. Something for anglers to look forward to is the 2017 arctic char stocking in Glad Lake. With funding from the Hunter & Angler Preservation Fund and support from the Whiteshell Fish Hatchery, we were able to purchase and raise over 25,000 char eggs intended for Glad Lake since the fall of 2015. 2016 will mark the 8th consecutive year of the Beautiful Lake Adult Walleye Transfer. Stocking adult walleye is very beneficial for; the survival of the fish, providing instant angling results, increasing spawning populations and increasing recruitment success. The Beautiful Lake Walleye Transfer is scheduled for September and SVSFE, Fisheries Branch, Intermountain Sport Fishing Enhancement and countless other volunteers will step up to the challenge and transfer sub adult/adult walleye to local lakes. Since 2009, we have successfully transferred over 35,000 adult and sub-adult walleye to our local water bodies through this initiative.



- **Promotion, Fish Camp and Angler Surveys**

– Over the years, SVSFE has collected giga-bites of data on dozens of our local fisheries that we believe would be beneficial to anglers. We have decided to allocate time and money to designing informative lake signs, updating our website and installing new fishing docks. Signs installed at selected boat launches will include large depth maps as the focal point, along with beneficial information including species present, regulation references, lake statistics,



management plans, fishing tips, etc. Docks being installed this year are destined for Beaver, Marge, Spray, West Blue, Perch and Deep Lake. SVSFE’s 6th Annual Fish Camp for children 9-14 will occur in late August 2016. This extremely popular program is gaining quite the reputation as it prepares our young stewards to become safe, responsible, and sustainable fisher of the future. 2016 will also mark the second consecutive year of the “SVSFE Angler Survey”. This survey has been designed to incorporate anglers and their knowledge assisting us in acquiring important qualitative data along with incorporating angler opinions into fisheries management decisions. Visit our website and fill one out today!

THANKS FOR YOUR PARTICIPATION AS YOUR INFORMATION IS ESSENTIAL TO LOCAL FISHERIES MANAGEMENT