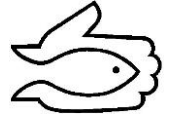


# **SWAN VALLEY SPORT FISHING ENHANCEMENT INC.**



## **2017 PROJECTS UPDATE**

*Swan Valley Sport Fishing Enhancement, with the support of partners and Fisheries & Wildlife Enhancement Fund (FWEF), have conducted/initiated various studies and programs including: fish habitat enhancement, walleye telemetry work, trap netting programs, creel surveys, stocked trout index netting, stocking initiatives, promotion of local lakes, improvement of fishing access and has also become a strong venue for fisheries education. These programs and projects have been very beneficial for the local area and have attracted attention from all interested public. The results from recent research projects have already contributed to current management and stocking decisions. Many projects require continual or rotational surveys to validate results and to obtain a better understanding of the state of the fishery.*

### ***What's happening for the 2017 Season?***

**SVSFE Zebra Mussel Early Detection Program:** Aquatic invasive species (AIS), particularly zebra mussels are becoming a concern in the Province of Manitoba as they continue to move in a north-westerly direction year after year. In 2016, a Singush Lake substrate sampler tested positive for a suspect zebra mussel. This invader can completely shift the state of aquatic ecosystems including changing water chemistry, clogging up discharge drains, and even impacting fish health and survival. This situation is very serious and needs to be addressed to prevent further lake contamination. For this reason, SVSFE will continue to install *zebra mussel substrate samplers* in each of our local angling destinations with intention to be proactive, monitor potential spread, and limit further contamination. Stop the spread "*Clean + Drain + Dry your watercraft*"

**Glad Lake Pike Removal/Char Stocking:** Since 2015, SVSFE has removed over 1000 northern pike from the waterbody as a effort to assist arctic char growth and survival. 22,250 Arctic char were stocked on June 7<sup>th</sup>, 2017.

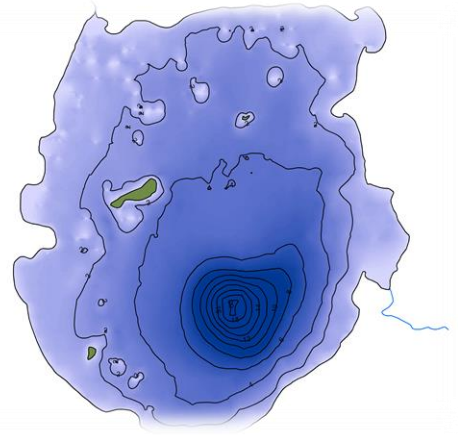


**Trout Maintenance Programs:** In many trout lakes throughout the province, the increase of non-trout species populations have become a growing concern. These species, including yellow perch, northern pike, white-sucker, and walleye etc. are strong competitors with trout and have resulted in decreased trout growth/survival and ultimately fishing quality. For this reason, SVSFE and Fisheries Branch are taking steps to battle these encroachments which have been coined "Trout Maintenance Programs". This season, trout maintenance programs initiated will include; Glad Lake (pike), Two-Mile Lake (assessments), Gull Lake (assessments), and East Blue Lake (white-sucker).

**THANKS FOR YOUR PARTICIPATION AS YOUR INFORMATION IS ESSENTIAL TO THE MANAGEMENT OF OUR FISHERIES RESOURCES.**

**Lake Inventory, Exploration, and Mapping** – SVSFE has

always been involved in creating new fisheries, initiating sport fish introductions, and providing anglers with advice/tools to enhance their sport fishing experience. In the summer of 2017, we plan to acquire baseline data on a few waterbodies to determine potential for sport fish introductions including Stanton Lake and Piasta Lake. During this season, SVSFE plans to depth map some of our regional waterbodies including Cross Lake, Fishing Lake, Pickerel Lake and Shilliday Lake.



**Armit Lake Fisheries Assessment** – Armit Lake test netting, water chemistry, bathymetric collection, and forage assessments will be conducted mid-summer 2017. Results from the assessment will assist Fisheries Branch and SVSFE ensure proper management plan for Armit Lake... one of the largest fisheries in the area.

**Trout & Walleye Stocking** - As we all know; stocking fish is essential to sustaining fisheries where natural recruitment is either low or non-existent. For this reason, SVSFE tends to involve ourselves, whenever possible, by assisting Fisheries Branch in supplemental stocking. Through assisting we can aid in "scatter stocking" of both trout and walleye throughout the open water season. Scatter stocking, as the word suggests, essentially scatters fish throughout a specific water body and therefore increases chances of survival. Our group has also purchased fish outside of the provincial stocking program to stock in local lakes. This year will mark the 9th consecutive year of the Beautiful Lake Adult Walleye Transfer. Stocking adult walleye is very beneficial for; the survival of the fish, providing instant angling results, increasing spawning populations and increasing recruitment success. The Beautiful Lake Walleye Transfer is scheduled for September and SVSFE, Fisheries Branch, Intermountain Sport Fishing Enhancement and countless other volunteers will step up to the challenge and transfer sub adult/adult walleye to local lakes. Since 2009, we have successfully transferred over 35,000 adult and sub-adult walleye to our local water bodies via the Beautiful Lake Walleye Transfer.



**THANKS FOR YOUR PARTICIPATION AS YOUR INFORMATION IS ESSENTIAL TO THE MANAGEMENT OF OUR FISHERIES RESOURCES.**

**Walleye Recruitment Surveys** – SVSFE has always been interested in walleye recruitment success as to facilitate proper walleye stocking rates and stocking densities. New and ongoing walleye recruitment surveys will be conducted in Wellman, Beaver, Marge, Whitefish, Deep, and Virgin Lakes in the late summer/fall of 2017.



**Promotion, Infrastructure, & Fish**

**Camp** Over the years, SVSFE has collected masses of data on dozens of local waterbodies. This data is intended to be public domain, and for the use and enjoyment of the angling community. As each season comes to an end, and our project reports become complete, we upload them to our website. Our research can be viewed at: [www.swanvalleysportfishing.com/ research](http://www.swanvalleysportfishing.com/research). Also, each year our group invests in fishing infrastructure which includes the construction and installation of fishing docks along with access improvements. This year, we intend to install two more fishing docks, at both Deep Lake, and Marge Lake. SVSFE's Fish Camp has become a popular



entity for young anglers over the past few years. Our 7<sup>th</sup> Fish Camp is scheduled for August 14<sup>th</sup> – 20<sup>th</sup> at the United Church Camp for campers ages 10-14. SVSFE will be hosting two camps within this timeframe to accommodate the high numbers of interested youth. Camp provides both theoretical and practical fishing experiences designed to inform & motivate kids to pursue the goals of protecting, restoring, and sustaining fisheries and their watersheds. Sign up soon as spaces are limited.

**Angler Surveys:** 2017 will mark the third consecutive year of the "SVSFE Angler Survey". This survey has been designed to incorporate anglers' knowledge and acquire important qualitative data along with incorporating angler opinions into fisheries management decisions. Visit our website and fill one out today at [www.swanvalleysportfishing.com/angler-submissions-surveys](http://www.swanvalleysportfishing.com/angler-submissions-surveys)

**SWAN VALLEY SPORT FISHING ENHANCEMENT INC**  
[www.swanvalleysportfishing.com](http://www.swanvalleysportfishing.com)  
**BOX 120, SWAN RIVER, MB**  
**ROL 120**  
**(204) 734-8836**

**THANKS FOR YOUR PARTICIPATION AS YOUR INFORMATION IS ESSENTIAL TO THE MANAGEMENT OF OUR FISHERIES RESOURCES.**